



# GAT MONTHLY MEMBERSHIP PROGRESS REPORT

Results as of: 6/30/2023

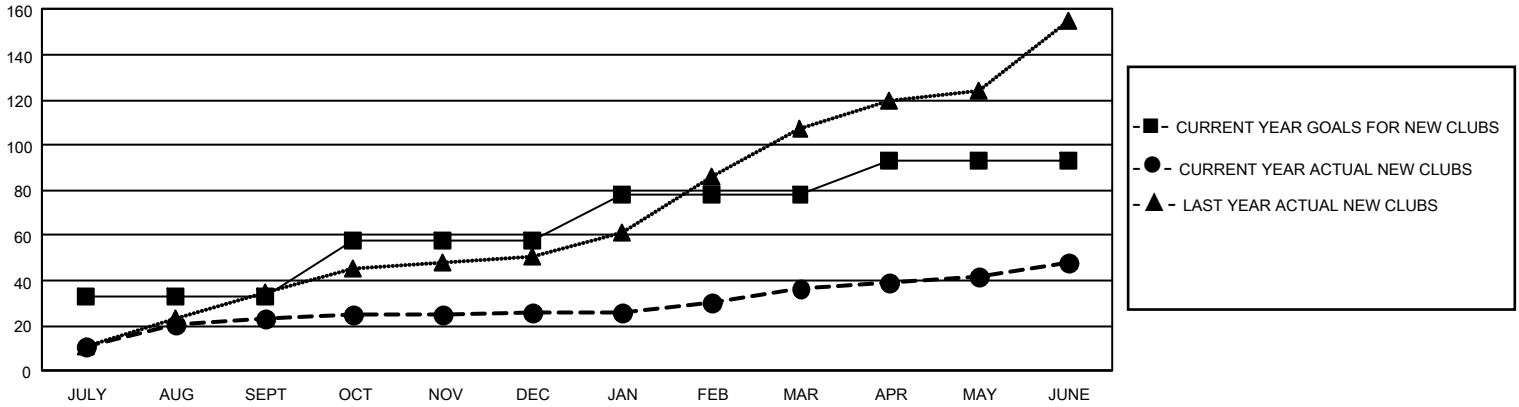
## GMT Constitutional Area 6, Group K

REPORT DOES NOT INCLUDE CLUBS IN UNDISTRICTED AREAS.

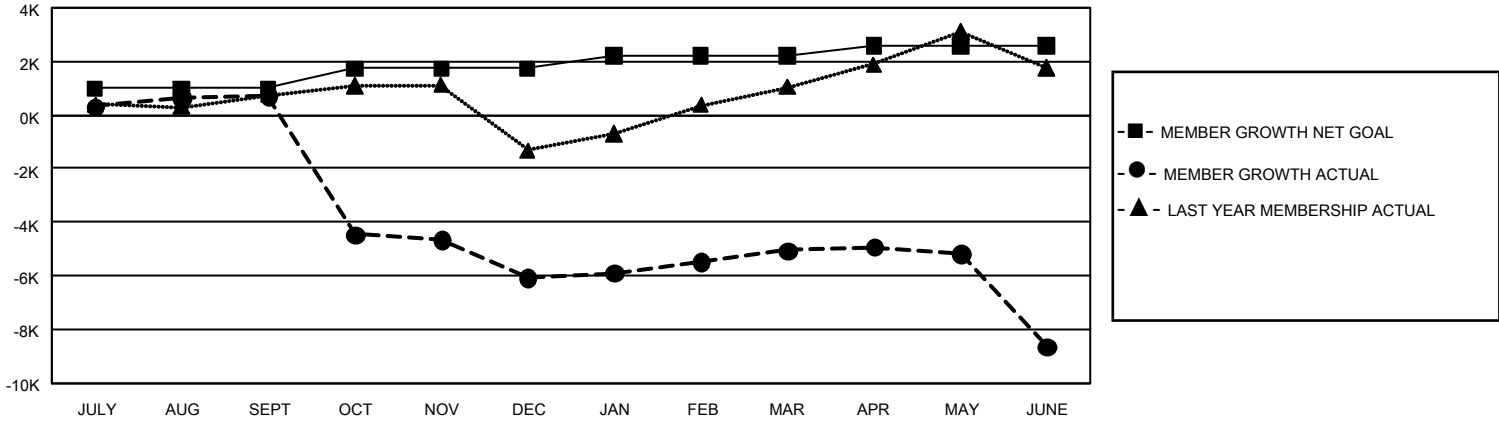
Clubs			
RESULTS FOR 2022-2023			
QUARTER	NEW CLUB GOAL	NEW CLUBS	DROPPED CLUBS
JULY/AUG/SEPT	99	23	14
OCT/NOV/DEC	75	3	304
JAN/FEB/MAR	60	11	13
APR/MAY/JUNE	45	11	35

Members			
RESULTS FOR 2022-2023			
QUARTER	MEMBER GROWTH NET GOAL	MEMBER GROWTH ACTUAL	DROPPED MEMBERS ACTUAL (including transfers)
JULY/AUG/SEPT	985	2,022	1,095
OCT/NOV/DEC	750	715	7,431
JAN/FEB/MAR	470	1,750	408
APR/MAY/JUNE	380	1,563	4,837

GOALS AND ACTUAL NEW CLUBS CUMULATIVE



GOALS AND ACTUAL MEMBERS CUMULATIVE



<b>DROPPED CLUBS: 366</b>	804 CLUBS OF 1,532 ADDED 1 OR MORE NEW MEMBERS	<b>GENDER DISTRIBUTION</b>	
		MALE 23,627 (66.30%) FEMALE 11,998 (33.67%) NON BINARY 1 (0.00%) PREFER NOT TO ANSWER 13 (0.04%)	
<b>DROPPED MEMBERS</b>		<a href="#">CLICK HERE FOR CUMULATIVE MEMBERSHIP DATA</a>	TOTAL FAMILY UNIT MEMBERS 18,810
DECEASED 107 CLUB CANCELLED 7,076 OTHER 6,587 <b>TOTAL 13,770</b>			FAMILY MEMBERS PAYING HALF DUES 10,931